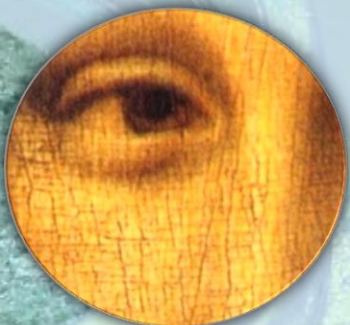
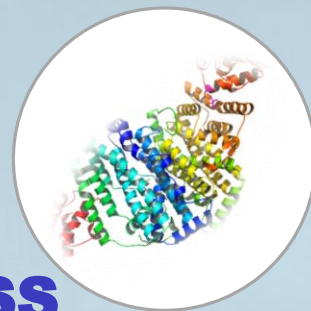


With **PHYLOGENE**,  
It's time to think out of the box...



## ABIOTIC STRESS

*UV, blue light, pollution, cigarette smoke..*

### YOUR SAMPLES

Cell cultures, skin explants, rebuilt skins, D-Squames, swabs, extra cellular matrix, sub-proteomes....

Substantiate without presuming the **effects** of your active compounds

Get a complete investigation approach of **stress** implemented with an **extensive protein oxidation focus**

PROTEINS  
EXTRACTION

NANO LC-MS/MS  
and DATA PROCESSING

High resolution  
identification and relative  
quantification of proteins  
in treated vs untreated  
samples

### OXIDATION

RedOxMics™

18 RedOx reaction  
modifications of 10 amino  
acids:

Aspartic acid, Histidine,  
Leucine, Methionine,  
Phenylalanine, Proline,  
Threonine, Tryptophane,  
Phenylalanine, Arginine

OXIDATION  
RATIO

OxDeep™

Stress deepness:  
Ratio of number of  
oxidized peptides  
species

BIOINFORMATICS  
ANALYSIS

CORAVALID™

Involved metabolic and signaling  
pathways, biological processes  
and significances, molecular  
functions, cellular components,  
Synthesis of phenomenons,  
phenotyping,...

### CLAIMING POTENTIALS

COSMETIC POTENTIAL

Anti-aging, moisturizing, toning,  
pigmentation, slimming, ...

DERMATOLOGICAL CARE  
POTENTIAL

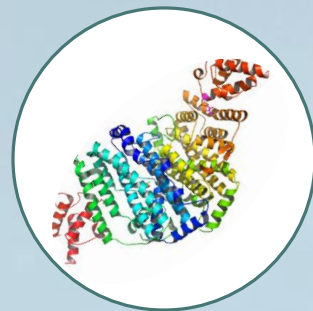
stress protection, cicatrization  
improvement, drugs effects, allergic  
reaction & hypersensitivities  
improvement,...

CHARACTERIZATION

Differences  
between healthy and  
**stressed** skins,...



With **PHYLOGENE**,  
It's time to think out of the box...



## PROTEOMICS

*Proteins are directly in charge of cell functions and structures*

### YOUR SAMPLES

Cell cultures, skin explants, rebuilt skins, D-Squares, swabs, extra cellular matrix, sub-proteomes....

Substantiate without presuming the **effects** of your active compounds

Determine the **biomarker** of your ingredient and find a new story

Elucidate the **mechanisms of action**

Identify potential **safety issues**

PROTEINS  
EXTRACTION

NANO LC-MS/MS  
and DATA PROCESSING

High resolution identification and relative quantification of proteins in treated vs untreated samples

BIOINFORMATICS  
ANALYSIS  
CORVALID™

Involved metabolic and signaling pathways, biological processes and significances, molecular functions, cellular components, Synthesis of phenomena, phenotyping,...

CLAIMING POTENTIALS

COSMETIC POTENTIAL

Moisturizing, anti-aging, toning, anti-pigment irregularities, slimming, ...

DERMATOLOGICAL CARE POTENTIAL

Solar protection, cicatrization improvement, drugs effects, allergic reaction & hypersensitivities improvement,...

CHARACTERIZATION

Types of skins, differences between healthy and diseased skins,...

